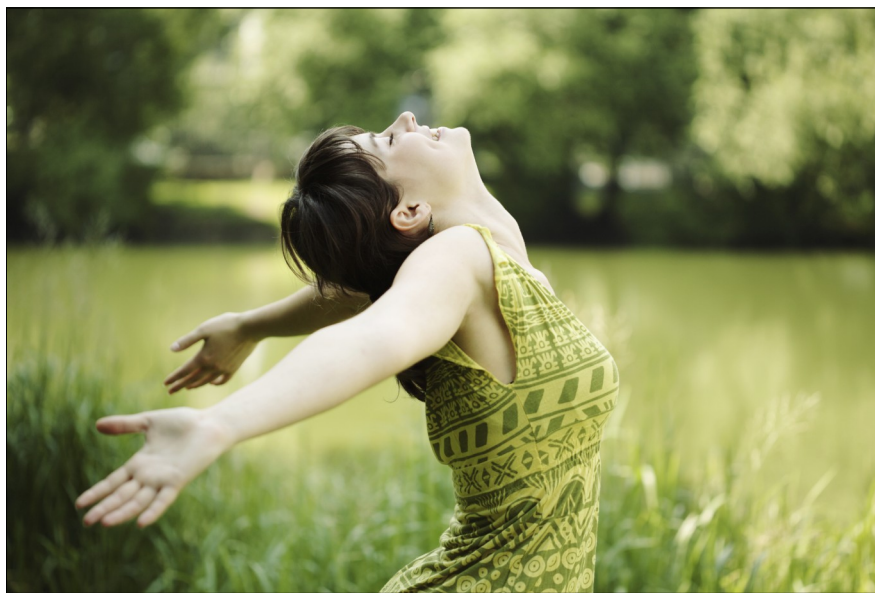




Amethyst Women's Addiction Centre Report to the Community

Fiscal year ending March 31st, 2010

Helping Women Build Healthier Lives



Our Mission

Amethyst Women's Addiction Centre offers alternative addiction services to women. Amethyst is committed to working with diverse and marginalized groups of women. Our aim is to support women, individually and together, to take control of factors affecting our health and well-being.

Our Philosophy

Amethyst is grounded in the feminist belief that women's experiences with alcohol, drugs and gambling cannot be separated from our experiences and status as women. We make direct links between the unequal position of women in society, the various forms of violence against women and substance use and/or problem gambling. A central task of Amethyst is to help women take charge of their lives by ending substance use and/or problem gambling and by making changes that enhance their strengths, their freedom and their choices.

Our Vision

Amethyst aspires to equality and justice for all women. A health service concerned with prevention as well as direct service, Amethyst works toward changing unjust social structures that place women at risk of addiction. We address and communicate the specific ways in which substance use and/or problem gambling affect women's well-being and why social change is necessary.

488 Wilbrod Street
Ottawa, Ontario
K1N 6M8

Telephone: 613.563.0363
TTY: 613.563.2995
Fax: 613.565.2175

Report from the Board

Amethyst Women's Addiction Centre celebrated its 31st anniversary this year and as each year passes Amethyst retains its vibrancy and core commitment to all women of the Ottawa community. Amethyst began in 1979 with a group of women who had a vision and there are still staff members from the originating body who guide the founding principles. The first of its kind in Canada, Amethyst was education-based in the beginning and now programs include counselling for drug addiction, alcohol addiction, gambling problems, sexual abuse, as well as youth health promotion and addiction prevention workshops and services are available in both English and French.

It is an honour and a pleasure to have a wonderful working relationship with the staff of Amethyst and as such it was a very deep sorrow to have experienced the loss of Marie Gérin. The dedication of the Amethyst staff is a motivation for the Board. We would like to thank the staff for their presentations at our meetings, allowing us an insight to their realities. All of our Committees at Amethyst, composed of both Board and Staff members, were hard at work this past year.

We are a "working Board" meaning that we sit on various committees, and participate in community events and fundraising initiatives. We have welcomed new faces on the Board and have said goodbye to others. We would like to extend our thanks to the departing Board members for their hard work, support and dedication, and would like to extend a warm welcome to the new Board members.

We continue to be grateful for the funding we receive through the Champlain LHIN and the United Way/Centraide Ottawa, however, we have not received any substantial new funding this year, while the needs for our services have neither decreased nor remained static. Board and Staff, through careful consultation and planning, try to ensure that Amethyst continues to provide our services in the most effective, caring and efficient way with the resources we have. As such we are deeply appreciative of Masha Krupp Translation Group Ltd. who generously sponsored the second annual Amethyst Track Challenge. The event was a tremendous success. We are grateful for the support from all of our sponsors and those who sponsored events and donated prizes.

On behalf of the Board, we would like to thank the members of the community who volunteer their time to help with fundraising and volunteer outreach work. We would also like to thank the individuals and organizations in the community who help Amethyst through financial support; it is greatly appreciated.

As we move forward together - community, clients, staff and board - our hope is that Amethyst's place in the community will continue to give meaning and hope for women's health.

Karoline Klüg, President of the Amethyst Board



**A United
Way/Centraide
member agency**



**Ministry of Health and Long-
Term Care**

Amethyst Board

Karoline Klüg
President

Thérèse Samuel

Andree Taylor
Secretary

Tara Lyons

Heather Lynch

Kim Hellemans

Report from the Management Committee

“Coming together is a beginning...keeping together is progress...working together is a success.”

There were some minor staff changes this fiscal year. Jacqueline Crépin, our French Treatment Counsellor who was on a part-time contract with us, was hired to fill the part-time permanent vacant Treatment Counsellor’s position in our French Treatment Substance Abuse Program. Kate, our Community Relations Coordinator, had left Impact Public Affairs and we’re now working with Cynthia Waldmeier. Welcome to Jacqueline and Cynthia!

In the spring, we dedicated a garden beside the house to our beloved counsellor Marie Gérin who had passed away in September. Marie is greatly missed by all.

We had a bat problem in the fall and had received \$2,500 in a Priority Funding Grant from the Champlain LHIN for the emergency removal of the bats. As well, we also received a One-time Funding Grant of \$13,700 from the Champlain LHIN for this fiscal year; we had used this grant to upgrade our phone system, to make some purchases under the health & safety category and to have some client resources printed.

We had received a \$10,000 grant from the Epiderma Foundation for our Health Promotion Program submission to get professionals – dietician, yoga instructor, aroma-therapist/massage therapist to come in to do workshops and consultations for our clients in our onsite and off-site programs. This initiative was so successful for our clients that we had decided to put in a renewal application for the 2010-2011 year.

We had also received \$3,900 from the May Court Club of Ottawa to purchase books and resource materials for clients, as well as to purchase food for the Intensive Program and for the children’s programs.

United Way/Centraide Ottawa has restructured their governance model to a new “impact framework” funding model based on priority community issues; this would be implemented in 2011. For this year, there wouldn’t be any calls for program proposal renewals until this new funding framework was implemented. In the meantime, our programs that were up for renewal this fiscal year would be renewed for one year based on our Year End Reports; we were successful in getting them renewed for another year.

Our major fundraising initiative, the Amethyst Track Challenge was very successful; we had raised \$34,605. Kudos to Kate and Jane for their hard work in organizing this major event! As well, this year The Printing House (TPH), selected Amethyst as a recipient of a Christmas card fundraiser they had initiated and, as a result, we have received \$9,500 donation from them.

In closing, I would like to take this opportunity to thank Amethyst’s hard-working Board of Directors for their outstanding work and continued support, Management Committee members and Staff who did exceptional work during this period and a big thank-you to the community members, donors and volunteers for their support, generous contributions and commitment to Amethyst.

Carol Wu, Management Committee

Amethyst Staff

Administration	Jocelyn Bigras Tracy Doran
Coordinator	Carol Wu
Counsellors/Conseillères	Nighat Ara Nadine Letang - Early Childhood Development Emily Bain Gundel Lake Rose McDade Donna Hall - Kanata Satellite Office Jacqueline Crépin
Community Relations	Jane Wood Cynthia Waldmeier
Childcare Coordinator	Cathy Dolan
Health Promotion Program	Sandi Harmer Dianne Rogers
Intake Worker	Claire Lacelle

English Treatment Program

Nighat Ara, Gundel Lake, Emily Bain, Nadine Letang, Rose McDade

The English treatment team has been working hard to keep the waiting list of clients at a tolerable level. Four intensive programs were offered last year and client participation rate was quite satisfactory. Counsellors were also busy offering after care services, referrals and other liaison work.

Our beloved co-worker Marie Gérin's sudden death was so heartbreaking that we had to cancel an intensive program that was supposed to start on the day we got the sad news. Her absence is still painful.

A six - week long "mother-daughter program" was offered in October and eight women have successfully completed the program. Attendance and participation in weekly support groups was also consistent and satisfactory throughout the year.

Planning week has been split up into two halves in order to run Amethyst more efficiently. We spent three days instead of a week last September to develop our half yearly strategic plan of action. Lots of brainstorming and exchanges of views enriched our teamwork during those meetings.

The addition of yoga, massage therapy and nutritional counselling with the funding of the Epiderma Foundation started last year and gradually became very popular among the women in recovery. We look forward to the continuation of these services.

Realizing the need for trauma work in addiction treatment most of the counsellors took extra workshops/trainings to update their knowledge and skill on the subject.

We had a wedding this February. Nadine and Stephane finally tied the knot on a beach in Jamaica. Their son Ludovic along with many other family members and friends were present to celebrate the occasion.

Through the periods of joy and sorrow, the treatment team stayed strong and together.

Nighat Ara, Counsellor

Student Placement

2009 – 2010 has proven to be another busy year in terms of student placements. We have been very lucky to have had Kasey Snerch join us at Amethyst this year from Algonquin College's Social Service Worker Program. Kasey completed with us a two-term placement, bringing with her a wealth of energy and enthusiasm and it has been a pleasure to work with her.

Aside from Kasey joining us, we have been inundated with requests from students who wish to complete their placement at Amethyst. Based on the range of calls from students from as far away as Sudbury to across the river in Gatineau, I have been reminded yet again of what a truly unique setting Amethyst is.

Gundel Lake, Counsellor

Early Childhood Development and Women with Addictions Program

Responsibilities in the Early Childhood Development and Women with Addictions program include: facilitating the Intensive Program at Amethyst, facilitating groups, facilitating Fetal Alcohol Spectrum Disorder (FASD) training on behalf of the FASD Coalition every eight weeks as well as having a caseload of thirty clients. All of the clients in this program are mandated by the Children's Aid Society of Ottawa.

We continue to work closely with our partners: Rideauwood Addiction & Family Services, Pathways Alcohol & Drug Treatment Program and Addiction Services of Eastern Ontario. The services that we are presently providing in the Champlain LHIN area include: providing counselling, referrals and case management to the pregnant and parenting women with addictions. There is also an emphasis placed on training and improvement of community capacity building to support young families with addictions.

The service model of this program began six years ago as a combination of outreach and capacity building as well as case management services to improve outcomes for mothers and their children; this has worked well for our district.

Nadine Letang, Addiction Treatment Case Manager

Sexual Abuse Support Program

The Sexual Abuse Support Program offers individual and group counselling for women in the community who are in recovery from gambling and/or substance abuse and who want to explore and heal from experiences of sexual abuse.

In the past year, nine women benefited from participating in the two groups offered last fall and spring. The evaluations received indicate that participants were helped to become more aware of the impact the abuse had on various aspects of their lives, including behaviours, feelings and beliefs. Some participants started to experience more positive feelings about themselves, while others became more aware of how difficult it is to express their feelings.

This year we saw a need for the group to incorporate therapeutic processing, as well as to provide psycho-education information. Since this need has become apparent, the Sexual Abuse Support Program Coordinator has run the program incorporating both these aspects. In addition, she has started using group sandplay therapy and other experiential exercises to help clients process their traumatic experiences.

The coordinator hopes to develop an extension to The Sexual Abuse Support Program that provides women with a four-week workshop on trauma, sexual abuse and addictions. This program would be for women that are not yet ready to participate in the twelve-week group. As this new extension is dependent on funding, we hope to have it up and running in the next few years.

Emily Bain, Counsellor and Sexual Abuse Support Program Coordinator

Francophone Treatment Program

The Francophone Program had a lot of activity this year. Time was spent re-grouping after Amethyst counselor Marie Gérin's sudden death. She is dearly missed. I was able to continue offering the programs and activities to the Francophone population. It has been a challenge to find a second Francophone treatment counsellor.

One eight-day Intensive Program took place in November; the evening support groups had been well attended. A newly developed six-week evening program on 'Les Relations Saines' (Healthy Relationships) will be offered in the fall of 2010. It will be given during the evening in order to accommodate women in the workplace.

We were proactive in forming new partnerships in the Francophone community by establishing contacts, networking through workshops and information sessions, participating in forums, attending conferences and through educational programs and courses. The exchange of information promotes a better understanding of each others' agency standards, policies and procedures. This information enables us to identify possible changes and improvements that would enhance client services and programs in our Agency. It also helps us build our resource list of Francophone programs and services offered in our community.

We sit on several regional committees: 'Le comité inter-provincial du jeu problématique, le réseau Franco-Toxico, the Ottawa Problem Gambling Coordinating Committee as well as internal committees like the Harm Reduction Committee and the Francophone Advisory Committee at Amethyst.

Jacqueline Crépin, Counsellor

About our current clients

Problem Substance identified

- | | |
|-------------|-------------------------|
| 1. Alcohol | 5. Cocaine |
| 2. Tobacco | 6. Prescription opioids |
| 3. Cannabis | 7. Ecstasy |
| 4. Crack | 8. Benzodiazepines |

Other substances identified include amphetamines and other stimulants, other psychoactive drugs, over-the-counter codeine preparations, heroin/opium, hallucinogens

Income Source

Employment	194
Employment Insurance	17
ODSP (Ontario Disability Support Program)	59
Disability Income	50
Other insurance (exclu. Employment Insurance)	0
Ontario Works	126
Retirement Income	22
Other	30
None	10
Unknown	6
Family Support	23

First Language

English	438
French	92
Other	7

Education

No Formal Schooling	1
Some Primary School	2
Primary School	2
Some Secondary or High School	103
Completed Secondary or High School	97
Some Community College, CEGEP technical college	64
Completed Community College, Technical College, CE	112
Some University (Not completed)	52
University Degree Completed	99
Unknown	5

Legal Problems

No	468
Yes	56
Unknown	13

Health Promotion Program

Interactions between positive health outcomes and trauma/substance abuse studies tells us that many women report depression, anxiety, low self-esteem and social isolation before the onset of substance abuse. Those who attend Amethyst Women's Addiction Centre's Health Promotion Program also identified similar issues of daily life low self-esteem, anxiety, depression as a result of poor coping skills related to complex issues of daily life which is also true for the women in treatment. It is our intention to provide new coping skills and interventions which will reduce the need for treatment. By reaching out to an increasing number of populations of isolated women and women with mental health issues, Amethyst is following Health Canada's Best Practice statement which recommends early identification, intervention and outreach strategies to help enhance social functioning as well as reduce problem substance use. As in past years, there were constant and growing waiting lists for women waiting to get onto Amethyst's health promotion community programs.

Amethyst worked in partnership with colleagues in allied sectors which had limited resources to do these kinds of workshops on their own. As well, in these workshops we brought the perspective that helped change some risk-taking behaviours and attitudes. We provided prevention knowledge about the underlying causes of using substances or gambling to cope since participants in these workshops had at-risk behaviours and poor coping skills.

As our allied partners wanted our collaboration in implementing these health promotion programs and services we also used the opportunity to train staff and students of various partners. This year we offered three eight-week programs on Self-esteem, one eight-week program on Stress and Wellness, three eight-week programs on Anger Solutions, one eight-week program on Assertiveness, one six-week program on Family of Origin, one four-week program on Change and one eight-week program on Grief and Loss. This latter program was an extended version of the Grief and Loss workshop at St. Joe's Women's Drop-In from our Women Juggling Roles manual to address the issues of many women who were either dying themselves or had a close relative, friend or companion at the drop-in who was dying. All of the workshops above were weekly two hour sessions.

Last year we reported that we began to sow the seeds for a commitment to cultivate and nurture partnerships with First Nation, Métis, Inuit and Immigrant/Refugee women's services through a series of focused groups. We are every pleased to report that we were able to offer pilot programs to two Aboriginal groups this year. We collaborated with Métis Nation of Ontario to offer a nine-week culturally specific self-esteem building program which the participants entitled Belonging. We also co-facilitated an Inuit-specific women's self-esteem building group called Contentment at the Ottawa Inuit Children's Centre. A new partnership is in the process of being cultivated with a First Nations co-facilitator in preparation for a workshop series in the fall. The Children's Drug Abuse Prevention Program will continue to offer programs in the community and we are increasing collaboration with allied partners to offer the community based programs off-site. Play Therapy continues on an individual basis.

Sandi Harmer
Health Promotion Coordinator

Community Relations Program

The Community Relations Program at Amethyst continues to focus on updating and strengthening the agency's image, thereby maintaining its presence in both the addictions treatment field and the larger Ottawa and area community.

The 2009 Track Challenge was Amethyst's major fundraising event for the year. Thanks to title sponsor Masha Krupp, the challenge has become an annual special event for Amethyst. Teams from various local companies participated on June 23rd, 2009 at the Terry Fox Athletic Facility and tested their skills in track and field challenges. Donations received totaled over \$33,000, showing the generosity of many local business supporters.

Amethyst undertook a new initiative this year in honour of International Women's Day. Feminism: The Other "F" Word? was the title of a panel discussion and interactive workshop that was held on March 8th, 2010 at University of Ottawa's Desmarais Building. Featuring five women who spoke about their views on feminism, the participants highlighted a diverse range of issues that affect women on many levels. Amethyst received media coverage of this event from Rogers Television, 24 Hours Ottawa and The Ottawa Sun.

Amethyst partnered with Dave Smith Youth Treatment Centre and The Ontario HIV & Substance Abuse Training Program to present a two-day workshop. Offered in both January and March, local non-profit agencies sent employees at no cost to this training workshop.

Amethyst was thrilled to be chosen as one of the beneficiaries of the Annual Witches' Gathering charitable contribution. Amethyst would also like to thank The Printing House Ltd. (TPH) for their generous donation of \$9,500 in support of Amethyst's programs. TPH has been affiliated with Amethyst for several years as they provide special rates for all of Amethyst's printing needs.

Our Client Holiday Celebration in December 2009 went well; we had twenty-five clients and five outreach volunteers attend along with the staff.

Amethyst was present at a number of community events, including Take Back the Night March, Ottawa Chapter events of the Association of Fundraising Professionals, United Way's annual conference, local information fairs, and workshops for non-profit organizations.

Amethyst received significant donations from local business and dedicated private donors. Thanks to our supporters, we can continue to offer vital programming to the women who need our services.

Cynthia Waldmeier and Jane Wood, Community Relations

Statistics

English and French Admissions

Current Clients 537

Substance Abuse

Visits 4,048

Awareness 2,717

Gambling

Visits 174

Awareness 2,717

Intensive Treatment Program

English 25

Sexual Abuse Program

2 Groups with 12 women

Health Promotion

Offered 11 Groups with 67 participants

Community and Public Events

13 Events with 700 participants

Children's Drug Prevention Program

2 Programs with 7 children

Individual Sessions 13 children

Enriched Play Care

Visits Women and Children 332

Media Coverage 967,085

(CTV, CKCU, CBC, Ottawa Citizen Online)

Problem Gambling Program

2009-2010 has been another very busy year for the Problem Gambling Program. We continue to serve an increasing number of women through individual counselling, weekly support groups, and the intensive treatment program. Individual counselling services are offered in both English and French. Women also have access to other follow-up programs and workshops such as the Sexual Abuse Survivor Program, and Health Promotion programming. Our Problem Gambling Program Outreach Volunteer also has been very busy this year by working with a number of women who are new to Amethyst

Regrettably, my dear French counterpart - Marie Gérin - passed away in September 2009. Though she had been experiencing health difficulties for some time, none of us were prepared for the shocking news that she had passed. With this tragedy, it has been difficult to continue as usual, although we know Marie would want nothing less from us. However, I miss Marie deeply and honour her support and dedication to the Problem Gambling Program.

With tragedy, there is also often opportunity and this has been my experience in welcoming Jacqueline Crépin to the Problem Gambling Team. Jacqueline had already been at Amethyst for a number of months providing French Substance Use services, but with Marie's passing was willing to jump in to our other component of Treatment Services.

Staff have been able to participate in some training and learning opportunities this past year, including Sex and Gender Based Analysis at Work, HIV/AIDS training, and Attachment Workshop hosted by St. Mary's Home. Educational opportunities were very informative and relevant to the Problem Gambling Program. We also participated in the Provincial Problem Gambling Forum that was held in Ottawa.

Amethyst continues to work with various community agencies and remains a member of the Ottawa Problem Gambling Coordinating Committee (OPGCC). We also are members of the OPGCC's Francophone subcommittee, Comité des services en français sur le jeu problématique. And further, the Committee on Gambling Resources for Ontario Women to Reduce Harm (CGROWTH) has reconvened in order to provide support to each other in terms of providing service for women who problem gamble. Because there are so few women's specific problem gambling services, this network of professionals has been an amazing source of support for one another.

We have also had a busy year in terms of educational activities in the community, from participation at information fairs to leading professional development workshops to speaking at Algonquin College and Carleton University. This year, I also presented at a conference in New York City at the International Academy of Law and Mental Health's biannual Conference. At this event, I spoke about the unique needs of women who problem gamble, as well as the ways in which Amethyst provides unique services to these women. Each of these activities serves to raise the awareness of both Amethyst and problem gambling among women.

As the number of women accessing the Problem Gambling Program remains fairly consistent, we look forward to another busy year in 2010-2011.

Gundel Lake, Counsellor



Translation services for this report were generously provided by
The Masha Krupp Translation Group Limited.

*The Masha Krupp Translation Group Limited
Le Groupe de traduction Masha Krupp*

AUDITED FINANCIAL STATEMENTS
AMETHYST WOMEN'S ADDICTION CENTRE
March 31, 2010

Auditor's Report	1
Statement of Financial Position	2
Statement of Changes in Net Assets	3
Statement of Operations	4
Statement of Cash Flows	5
Notes to Financial Statements	6 - 9

NICHOLAS RALPH CA
Chartered Accountant

25 Settler's Ridge Way, Ottawa, Ontario K2J 4V3
613-823-9701
nicholasralph@rogers.com

AUDITOR'S REPORT

To the Board of Directors of Amethyst Women's Addiction Centre:

I have audited the statement of financial position of **Amethyst Women's Addiction Centre** at March 31, 2010, and the statements of changes in net assets, operations, and cash flows for the year then ended. These financial statements are the responsibility of the Organization's management. My responsibility is to express an opinion on these financial statements based on my audit.

Except as explained in the following paragraph, I conducted my audit in accordance with Canadian generally accepted auditing standards. Those standards require that I plan and perform an audit to obtain reasonable assurance whether the financial statements are free of material misstatement. An audit includes examining, on a test basis, evidence supporting the amounts and disclosures in the financial statements. An audit also includes assessing the accounting principles used and significant estimates made by management, as well as evaluating the overall financial statement presentation.

In common with many charitable organizations, the Organization derives revenue from donations, the completeness of which is not susceptible of satisfactory audit verification. Accordingly, my verification of these revenues was limited to the amounts recorded in the records of the Organization and I was not able to determine whether any adjustments might be necessary to donation revenue, excess of revenues over expenses, assets and net assets.

In my opinion, except for the effect of adjustments, if any, which I might have determined to be necessary had I been able to satisfy myself concerning the completeness of the donation revenues referred to in the preceding paragraph, these financial statements present fairly, in all material respects, the financial position of the Organization as at March 31, 2010 and the results of its operations and its cash flows for the year then ended in accordance with Canadian generally accepted accounting principles.



Ottawa, Ontario
May 7, 2010


Nicholas Ralph CA
Licensed Public Accountant

STATEMENT OF FINANCIAL POSITION
AMETHYST WOMEN'S ADDICTION CENTRE

	March 31	
	2010	2009
ASSETS		
CURRENT ASSETS		
Cash	\$ 87,350	\$ 87,538
Accounts receivable	2,455	3,517
Prepaid expenses	<u>2,594</u>	<u>2,420</u>
	92,399	93,475
CAPITAL ASSETS--Note D	<u>291,428</u>	<u>300,133</u>
	<u>\$ 383,827</u>	<u>\$ 393,608</u>
LIABILITIES AND NET ASSETS		
CURRENT LIABILITIES		
Accounts payable and accrued liabilities	\$ 47,474	\$ 63,063
NET ASSETS		
Invested in capital assets	291,428	300,133
Unrestricted	<u>44,925</u>	<u>30,412</u>
	<u>336,353</u>	<u>330,545</u>
	<u>\$ 383,827</u>	<u>\$ 393,608</u>

APPROVED ON BEHALF OF THE BOARD:


 _____ Director

 _____ Director

See notes to financial statements

STATEMENT OF CHANGES IN NET ASSETS
AMETHYST WOMEN'S ADDICTION CENTRE

	Invested in Capital Assets	Unrestricted	Year ended March 31	
			2010	2009
Balance, beginning of the year	\$ 300,133	\$ 30,412	\$ 330,545	\$ 339,703
Excess (deficiency) of revenues over expenses	-	5,808	5,808	(9,158)
Investment in capital assets	(8,705)	8,705	-	-
Balance, end of the year	\$ 291,428	\$ 44,925	\$ 336,353	\$ 330,545

See notes to financial statements

STATEMENT OF OPERATIONS

AMETHYST WOMEN'S ADDICTION CENTRE

	Year ended March 31	
	2010	2009
LHIN programs		
Revenues	\$ <u>840,017</u>	\$ <u>820,305</u>
Expenses		
Salaries and Benefits MOS	\$ 105,894	\$ 127,567
Salaries and Benefits UPP	<u>620,228</u>	<u>613,398</u>
Salaries and Benefits	726,122	740,965
Supplies	18,675	16,794
Travel	7,958	12,197
General	53,351	34,325
Equipment	4,491	4,777
Building Occupancy	<u>46,228</u>	<u>32,010</u>
	<u>856,825</u>	<u>841,068</u>
LHIN program surplus (deficit)	\$ <u>(16,808)</u>	\$ <u>(20,763)</u>
United Way programs		
Revenues	\$ 90,665	\$ 93,342
Expenses	<u>85,301</u>	<u>103,657</u>
United Way program surplus (deficit)	\$ <u>5,364</u>	\$ <u>(10,315)</u>
Other revenues and expenses		
Donations	\$ 36,696	\$ 32,479
Other Revenues	<u>40</u>	<u>229</u>
	<u>36,736</u>	<u>32,708</u>
Amortization	\$ 11,065	\$ 10,788
Play Therapy Program	<u>8,419</u>	<u>-</u>
	<u>19,484</u>	<u>10,788</u>
Other revenues and expenses surplus (deficit)	\$ <u>17,252</u>	\$ <u>21,920</u>
EXCESS (DEFICIENCY) OF REVENUES OVER EXPENSES	\$ <u>5,808</u>	\$ <u>(9,158)</u>

See notes to financial statements

STATEMENT OF CASH FLOWS

AMETHYST WOMEN'S ADDICTION CENTRE

	Year ended March 31	
	2010	2009
	<hr/>	
OPERATING		
Excess (deficiency) of revenues over expenditures	\$ 5,808	\$ (9,158)
Items not involving cash		
Amortization	<u>11,065</u>	<u>10,788</u>
	16,873	1,630
Change in non-cash working capital	<u>(14,701)</u>	<u>15,130</u>
	<u>2,172</u>	<u>16,760</u>
FINANCING		
Change in amounts due to / from related parties	\$ -	\$ 28,093
INVESTING		
Additions to capital assets	\$ (2,360)	\$ (14,331)
INCREASE (DECREASE) IN CASH	\$ (188)	\$ 30,522
CASH, beginning of year	<u>87,538</u>	<u>57,016</u>
CASH, end of year	<u>\$ 87,350</u>	<u>\$ 87,538</u>

See notes to financial statements

NOTES TO FINANCIAL STATEMENTS

AMETHYST WOMEN'S ADDICTION CENTRE

March 31, 2010

NOTE A--GENERAL

Amethyst Women's Addiction Centre was incorporated on May 5, 1978 under the Ontario Corporations Act without share capital. The corporation is registered under the applicable provisions of the Income Tax Act as a registered charitable Organization. The Organization offers day treatment programs to women who are dependent upon alcohol, drugs, or problem gambling. The Organization also offers Health Promotion, Sexual Abuse, and Children's and Parent-Child Groups in a holistic and supportive environment.

NOTE B--SUMMARY OF SIGNIFICANT ACCOUNTING POLICIES

Fund Accounting

Capital Asset Fund

The Organization's net investment (cost less amortization) in capital assets is reported in the Capital Asset Fund. The Capital Asset Fund is internally restricted by the Board of Directors.

Unrestricted Fund

All other revenues and expenses, and assets and liabilities, are reported in the Unrestricted Fund.

Capital Assets

Capital assets are recorded at cost. Amortization is recorded on the declining balance at the rate of 4% a year for building, and at the rate of 20% a year for equipment.

Use of Estimates

The preparation of financial statements in accordance with Canadian generally accepted accounting principles requires management to make estimates and assumptions that affect the reported amounts of assets and liabilities and disclosure of contingent assets and liabilities at the date of the financial statements and reported amount of revenues and expenses during the reporting period. These estimates are reviewed periodically, and, as adjustments become necessary, they are reported in earnings in the period in which they become known.

NOTES TO FINANCIAL STATEMENTS

AMETHYST WOMEN'S ADDICTION CENTRE

March 31, 2010

NOTE C--FINANCIAL INSTRUMENTS

Financial instruments are classified into one of the following categories: held for trading, held to maturity, loans and receivables, available for sale, and other financial liabilities. The classification determines the accounting treatment of the instrument: the classification is determined by the Organization when the financial instrument is initially recorded, based on the underlying purpose of the instrument.

The Organization classifies and measures its financial instruments as follows:

<u>Asset or Liability</u>	<u>Classification</u>	<u>Measurement</u>
Cash	Held for Trading	Fair value
Accounts receivable	Loans and Receivables	Amortized cost
Accounts payable and accrued liabilities	Other financial liabilities	Amortized cost

Financial instruments measured at amortized cost are initially recognized at fair value and then subsequently at amortized cost with gains and losses recognized in the statement of operations in the period in which the gain or loss occurs.

Changes in the fair value of financial instruments classified as available for sale are recorded in the statement of changes in net assets until realized, at which time they are recorded in the statement of operations.

Fair value of financial instruments

The fair value of a financial instrument is the estimated amount that the Organization would receive or pay to settle a financial asset or financial liability as at the reporting date.

The fair values of accounts receivable, and accounts payable and accrued liabilities approximate their carrying values due to their nature or capacity for prompt liquidation.

Risk management

The Organization manages its exposure to the risks associated with financial instruments that have the potential to affect its operating and financial performance with the objective of minimizing volatility in cash flow and operating results. The Organization does not use derivative financial instruments to manage its risks.

. . . continued

NOTES TO FINANCIAL STATEMENTS

AMETHYST WOMEN'S ADDICTION CENTRE

March 31, 2010

NOTE C--FINANCIAL INSTRUMENTS (continued)

Credit Risk

The Organization is exposed to credit risk resulting from the possibility that parties may default on their financial obligations, or if there is a concentration of transactions carried out with the same party or if there is a concentration of financial obligations which have similar economic characteristics such that they could be similarly affected by changes in economic conditions. The Organization does not hold directly any collateral as security for financial obligations.

The maximum exposures of the Organization to credit risk at December 31 were: cash \$87,350, (2009 - \$87,538), and accounts receivable \$2,455, (2009 - \$3,517).

Cash: credit risk associated with cash is mitigated substantially by ensuring that these assets are invested in financial obligations of Canadian chartered banks or major Canadian investment funds.

Accounts receivable: credit risk associated with accounts receivable is minimal as the amount is not material.

Management believes that concentration of credit risk with respect to cash is limited due to the credit quality of the counter-party.

Liquidity Risk

Liquidity risk is the risk that the Organization will not be able to meet a demand for cash or fund its obligations as they come due. Liquidity risk also includes the risk that the Organization might not be able to liquidate assets in a timely manner at a reasonable price.

The Organization meets its liquidity requirements by preparing and monitoring detailed forecasts of receipts and expenditures from operations.

Market Risk

Market risk includes currency risk, interest rate risk, and other price risk. The Organization is not exposed directly to currency risk or other price risk as its financial assets are denominated in Canadian dollars and are not by their nature subject to other price risk.

NOTES TO FINANCIAL STATEMENTS

AMETHYST WOMEN'S ADDICTION CENTRE

March 31, 2010

NOTE D--CAPITAL ASSETS

	<u>Cost</u>	<u>Accumulated Amortization</u>	<u>Net Book Value</u>
2010			
Land	\$ 154,000	\$ -	\$ 154,000
Building	268,231	157,849	110,382
Equipment	<u>144,895</u>	<u>117,849</u>	<u>27,046</u>
	<u>\$ 567,126</u>	<u>\$ 275,698</u>	<u>\$ 291,428</u>
2009			
Land	\$ 154,000	\$ -	\$ 154,000
Building	268,231	153,250	114,981
Equipment	<u>142,535</u>	<u>111,383</u>	<u>31,152</u>
	<u>\$ 564,766</u>	<u>\$ 264,633</u>	<u>\$ 300,133</u>

NOTE E--COMMITMENTS

The Organization is committed to make payments under a lease agreement for office equipment as follows:

	<u>2010</u>	<u>2009</u>
For years ending March 31:		
2010	\$ -	\$ 4,095
2011	3,984	3,984
2012	3,947	3,947
2013	<u>3,947</u>	<u>3,947</u>
	<u>\$ 11,878</u>	<u>\$ 15,973</u>

NOTE F--CONTINGENT LIABILITY

Under the terms of the Collective Agreement, the Organization is committed to make certain payments to employees upon attaining twenty years' service, upon retirement, or upon the Organization's ceasing operations, upon the condition that the Organization has, at the time of the crystallization of each commitment, sufficient funds at its disposal to meet the commitment. The total amount of these commitments assuming that the Organization does not cease operations, was approximately \$53,000 as at March 31, 2010 (2009 - \$54,000).



Amethyst Women's Addiction Centre

488 Wilbrod Street
Ottawa, Ontario
K1N 6M8

Telephone: 613.563.0363
TTY: 613.563.2995
Fax: 613.565.2175

www.amethyst-ottawa.org